

**RE/MAX**

COMMERCIAL

# Snyder Ct. @ IL 89 Washburn, IL



Jim Grube  
309-696-9110  
jimgrube@remax.net

**RE/MAX Unlimited Commercial**  
3622 N. Knoxville Avenue  
Peoria, IL 61603-1017  
Office: 309-687-4903  
Fax: 309-687-4980  
[www.commercialpeoria.com](http://www.commercialpeoria.com)

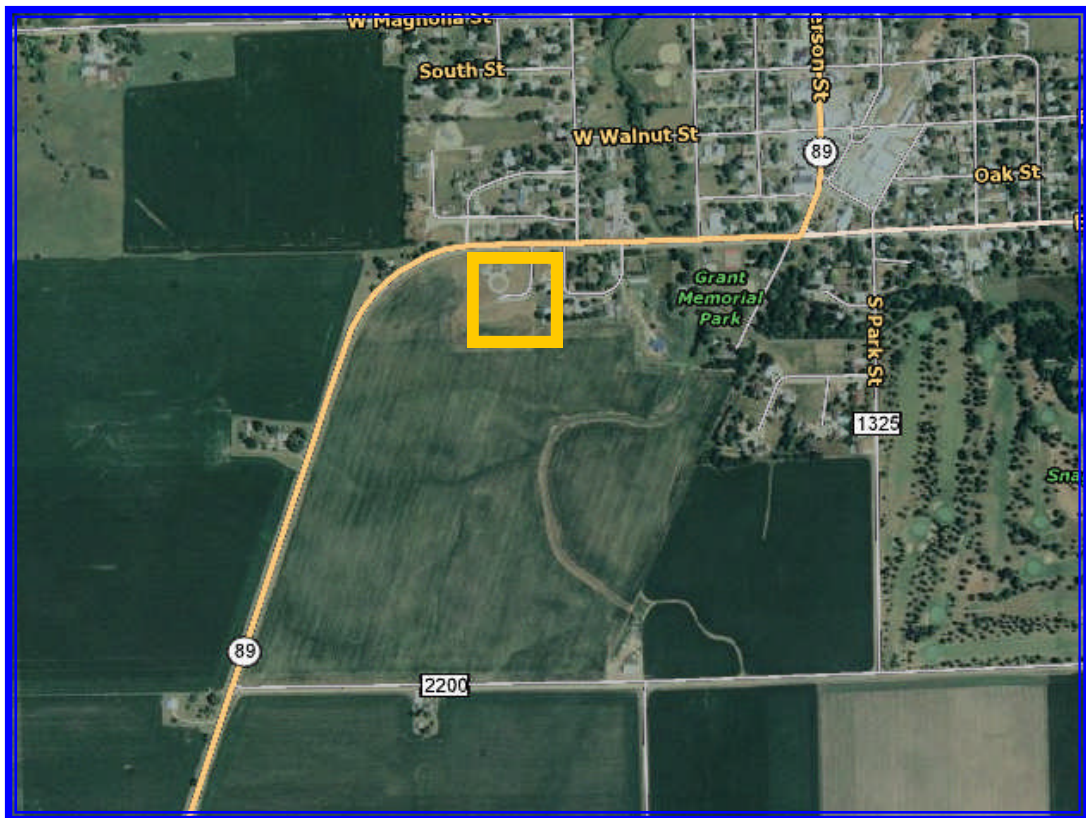


COMMERCIAL  
Real Estate



Information contained herein has been obtained from the property owner or from other sources that we deem reliable. We have no reason to doubt its accuracy, but we do not guarantee it. Each Office Is Independently Owned and Operated.

- **10 Acres development with all utilities!**
- **Two fully rented duplexes**
- **Corner of Rt. 89 & Snyder Ct.**
- **Room for additional development!**
- **\$319,900 for everything!**



Information contained herein has been obtained from the property owner or from other sources that we deem reliable. We have no reason to doubt its accuracy, but we do not guarantee it. Each Office Is Independently Owned and Operated.



Information contained herein has been obtained from the property owner or from other sources that we deem reliable. We have no reason to doubt its accuracy, but we do not guarantee it. Each Office Is Independently Owned and Operated.

**RE/MAX**

COMMERCIAL

# Snyder Ct. @ IL 89 Washburn, IL



**RE/MAX**

COMMERCIAL

RE/MAX Unlimited Commercial

3622 N. Knoxville Avenue

Peoria, IL 61603-1017

Office: 309-687-4903

Fax: 309-687-4980

[www.commercialpeoria.com](http://www.commercialpeoria.com)



COMMERCIAL  
Real Estate



Information contained herein has been obtained from the property owner or from other sources that we deem reliable. We have no reason to doubt its accuracy, but we do not guarantee it. Each Office Is Independently Owned and Operated.